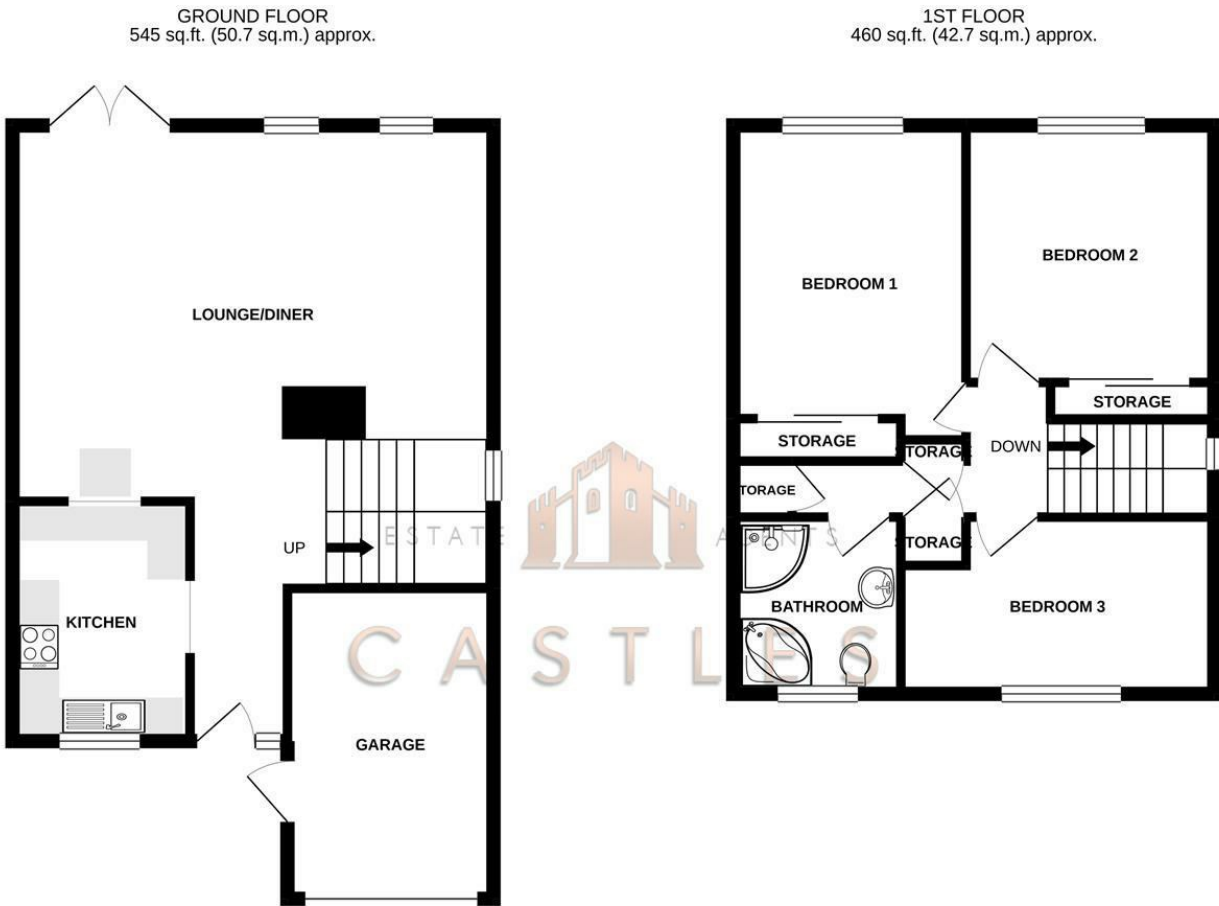


Floor Plan

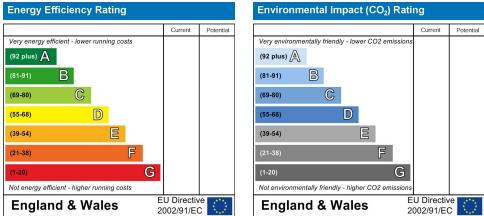


TOTAL FLOOR AREA : 1005 sq.ft. (93.4 sq.m.) approx.

Whilst every attempt has been made to ensure the accuracy of the floorplan contained here, measurements of doors, windows, rooms and any other items are approximate and no responsibility is taken for any error, omission or mis-statement. This plan is for illustrative purposes only and should be used as such by any prospective purchaser. The services, systems and appliances shown have not been tested and no guarantee as to their operability or efficiency can be given.

Made with Metropix ©2021

These particulars, whilst believed to be accurate are set out as a general outline only for guidance and do not constitute any part of an offer or contract. Intending purchasers should not rely on them as statements of representation of fact, but must satisfy themselves by inspection or otherwise as to their accuracy. No person in this firms employment has the authority to make or give any representation or warranty in respect of the property.



18 Winnham Drive  
Portchester, PO16 8QE

Castles are pleased to welcome to the market this three bedroom semi detached house with garage and driveway in the popular location of Winnham Drive, Portchester.

This property consists of an open plan lounge diner with working fireplace and breakfast bar linking into the kitchen on the ground floor. Upstairs there are three fair sized bedrooms and bathroom featuring a four piece suite. All new radiator have been added recently which is a bonus.

Externally the property has a driveway for two cars and an integral garage. There is side access to the south facing garden also.

For more information or to arrange a viewing on this property please call Castles today.

Offers in excess of £300,000



18 Winnham Drive  
Portchester, PO16 8QE



- SEMI DETACHED
- GARAGE
- SOUTH FACING GARDEN
- FOUR PIECE BATHROOM SUITE
- OPEN PLAN LOUNGE DINER
- OFF ROAD PARKING
- THREE BEDROOMS
- POPULAR LOCATION

**LOUNGE DINER**  
19'8" x 15'5" (6.0 x 4.7)

**KITCHEN**  
9'10" x 7'2" (3.0 x 2.2)

**BEDROOM ONE**  
13'9" x 9'2" (4.2 x 2.8)

**BEDROOM TWO**  
10'5" x 10'2" (3.2 x 3.1)

**BEDROOM THREE**  
12'5" x 7'10" (3.8 x 2.4)

**BATHROOM**  
7'2" x 6'10" (2.2 x 2.1)

**Financial Services**  
If you are looking to get a comparison on your mortgage deal then do let us know as we can put you in touch with some independent mortgage advisors that would be happy to help. It is always worth a last minute comparison before you purchase a property as the current deals can change weekly.

well recommended companies that would be happy to help and provide you with a quote.

**Solicitors**  
If you are looking for a solicitor to handle the conveyancing process then do let us know as we can point you in the direction of some local,

